

The *Seaview*

1,631 SQ. FT. LIVING SPACE
3 BEDROOMS | 2 BATHROOMS
2-CAR GARAGE



Elevation A



Elevation B

CONTACT US:
(352) 427-1160

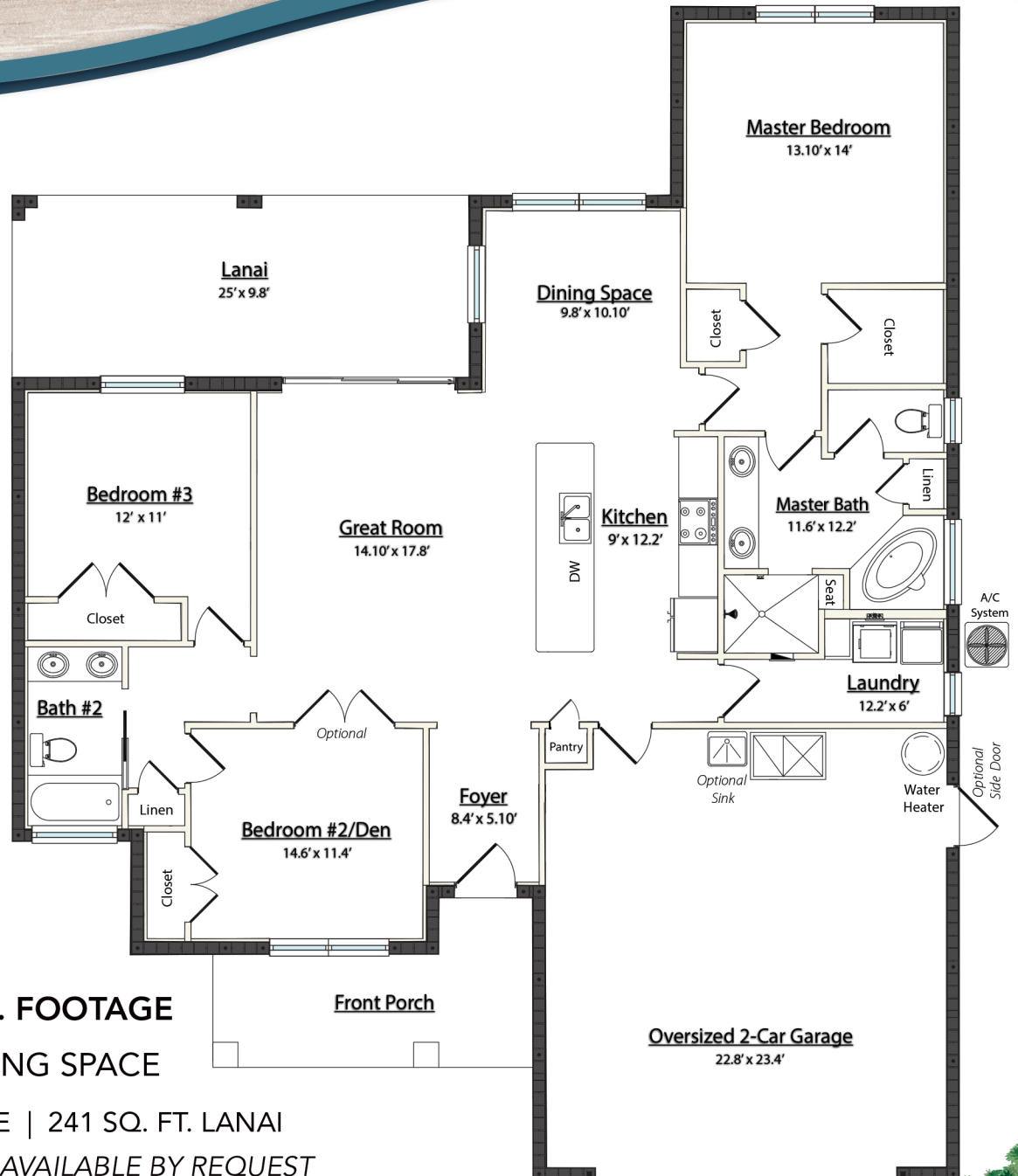
M.Garren@oak-ridgehomes.com
www.oak-ridgehomes.com

"Solid From the Ground Up"
OAK RIDGE HOMES
A DIVISION OF PATRICK HOLDINGS



The Seaview

1,631 SQ. FT. LIVING SPACE
3 BEDROOMS | 2 BATHROOMS
2-CAR GARAGE



2,516 TOTAL SQ. FOOTAGE

1,631 SQ. FT. LIVING SPACE

529 SQ. FT. GARAGE | 241 SQ. FT. LANAI

CUSTOM OPTIONS AVAILABLE BY REQUEST

All plans, drawings, presentations and elevations are artist renderings and may vary in precise detail and dimensions. All measurements of rooms and square footage are approximate and may vary in the field. Builder reserves the right to change and/or alter materials, specifications, features, dimensions, designs and price without prior notice. CBC1253608 All rights reserved. Oak Ridge Homes A Division of Patrick Holdings, LLC 2015

CONTACT US:
(352) 427-1160

M.Garren@oak-ridgehomes.com
www.oak-ridgehomes.com

"Solid From the Ground Up"
OAK RIDGE HOMES
A DIVISION OF PATRICK HOLDINGS

