

# THE *Malibu*

1,677 SQ. FT. LIVING SPACE  
4 BEDROOMS | 2 BATHROOMS  
2-CAR GARAGE



**CONTACT US:**  
**(352) 427-1160**  
M.Garren@oak-ridgehomes.com  
www.oak-ridgehomes.com

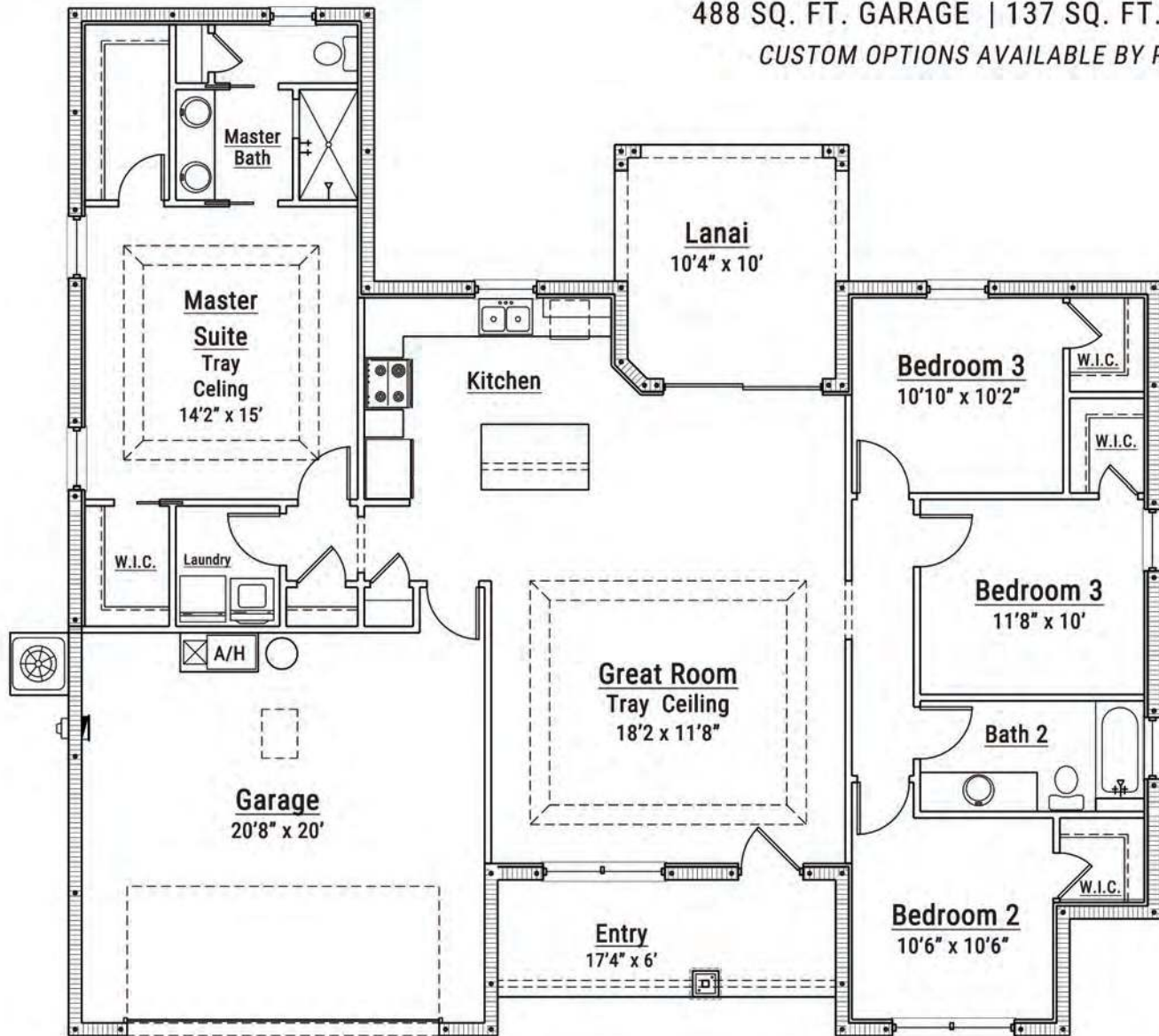
*"Solid From the Ground Up"*  
**OAK RIDGE HOMES**  
A DIVISION OF PATRICK HOLDINGS



# THE *Malibu*

1,677 SQ. FT. LIVING SPACE  
4 BEDROOMS | 2 BATHROOMS  
2-CAR GARAGE

2,406 TOTAL SQ. FOOTAGE  
1,677 SQ. FT. LIVING SPACE  
488 SQ. FT. GARAGE | 137 SQ. FT. LANAI  
CUSTOM OPTIONS AVAILABLE BY REQUEST



All plans, drawings, presentations and elevations are artist renderings and may vary in precise detail and dimensions. All measurements of rooms and square footage are approximate and may vary in the field. Builder reserves the right to change and/or alter materials, specifications, features, dimensions, designs and price without prior notice. CBC1253608 All rights reserved. Oak Ridge Homes A Division of Patrick Holdings, LLC 2015

**CONTACT US:**  
**(352) 427-1160**  
M.Garren@oak-ridgehomes.com  
www.oak-ridgehomes.com

*"Solid From the Ground Up"*  
**OAK RIDGE HOMES**  
A DIVISION OF PATRICK HOLDINGS

